

# Ostseestrand

bündisch moll (Kreuzpfadfinderbund Wuppertal und DPB Berlin)

Bm

F#m

G

F#

1. Stimme



1. Ta - ge ziehn wie Lich - ter fort und fol - gen uns - rer Rei - se  
2. E - ben sah man uns - re Spur im Sand doch nun ver - hüllt das  
3. Die Nacht ist schwarz wie ei - ne Koh - ten - bahn doch in der Fer - ne  
4. Mü - dig - keit, das letz - te Lied, die Stim - men wer - den lei - se,

2. Stimme



5

Bm

F#m

G

F#



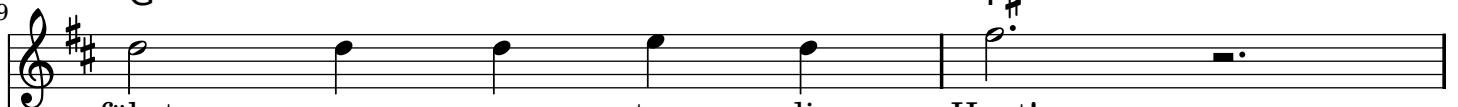
Heut ist nur der Wind noch wach und singt uns sei - ne Wei - se Er  
Tuch der Nacht den Son - nen - schein der uns - re Her - zen füllt Nur die  
grüßt die Nacht das stil - le Land und zeigt uns ih - re Ster - ne Gro - ßer  
bald schon geht es fort, denn wei - ter führt uns uns - re Rei - se. Do wid -



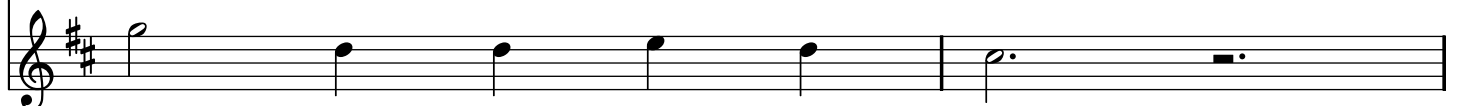
9

G

F#



fährt uns un - ter die Haut!  
klei - ne Ker - ze flammt auf!  
Wa - gen, nimm uns doch mit!  
zenia, wir keh - ren zu - rück!



11

Bm

D

A

F#m



Ref. Träu - men wir hier am Ost - see - strand



13

Bm

F#m

G

F#



mus - tern die Nacht - geis - ter je - der - mann



15

Bm D A F#m

Rau - schen die Wel - len und for - men den Sand

Detailed description: This system contains two staves of music. The top staff is a treble clef with a key signature of two sharps (F# and C#). It contains two measures of music. The first measure has a Bm chord above it and contains the notes G4, A4, and B4. The second measure has a D chord above it and contains the notes C#5, D5, and E5. The bottom staff is a bass clef with the same key signature. It contains two measures of music. The first measure has a Bm chord above it and contains the notes G3, A3, and B3. The second measure has a D chord above it and contains the notes C#4, D4, and E4. The lyrics 'Rau - schen die Wel - len und for - men den Sand' are written below the staves, with hyphens indicating syllables across notes.

17

Bm F#m G Bm

un - se - re Run - de bleibt un - er - kannt

Detailed description: This system contains two staves of music. The top staff is a treble clef with a key signature of two sharps (F# and C#). It contains two measures of music. The first measure has a Bm chord above it and contains the notes G4, A4, and B4. The second measure has an F#m chord above it and contains the notes C#5, D5, and E5. The bottom staff is a bass clef with the same key signature. It contains two measures of music. The first measure has a Bm chord above it and contains the notes G3, A3, and B3. The second measure has an F#m chord above it and contains the notes C#4, D4, and E4. The lyrics 'un - se - re Run - de bleibt un - er - kannt' are written below the staves, with hyphens indicating syllables across notes.